



Protective Hair and Face Spray – Leave on D/130/18 ref. A

Key Ingredient: Campo Raigankin Hydroglycolic Extract, Campo Siddha Medico Colors, Bioscontrol ® Sinergy PSB.

Phase	Ingredients	INCI	% w/w	Supplier
A	Water	Aqua	Qs to 100	/
	Glycerin	Glycerin	3.0	/
	Protelan PCA 40	Sodium PCA (and) Glycerin	2.0	Z&S
	Campo Raigankin Hydroglycolic Extract	Polyporus mylittae, propylene glycol, aqua	0.3	Campo
B	Alcohol	Alcohol	10.0	/
	Fragrance	Fragrance	0.1	/
C	Campo Siddha Neer Ellam Manjal	Melia Azadirachta Flower Extract, Melia Azadirachta Leaf Extract, Ocimum Sanctum Leaf Extract, Ocimum Basilicum (Basil) Flower/Leaf Extract, Curccuma Longa (Tumeric) Root Extract, Corallina Officinalis Extract, Aqua	0.1	Campo
	Bioscontrol Sinergy PSB	Aqua, Sodium Benzoate, Potassium Sorbate	Qs	Roelmi
	Lactic acid	Lactic acid	Up to pH 5.0 (0.05%)	

The information and recommendation in this publication are to the best of our knowledge and belief accurate at the date of publication. Nothing herein is to be construed as a warranty, express or otherwise. In all cases, it is responsibility of the user to determine the applicability of such information or the suitability of any products . Trade names named are property of the respective company. The formulation reported above are only guidelines for the best use of raw materials. They do not represent your final formulation. We are not held responsible for any unsuccessful trial.

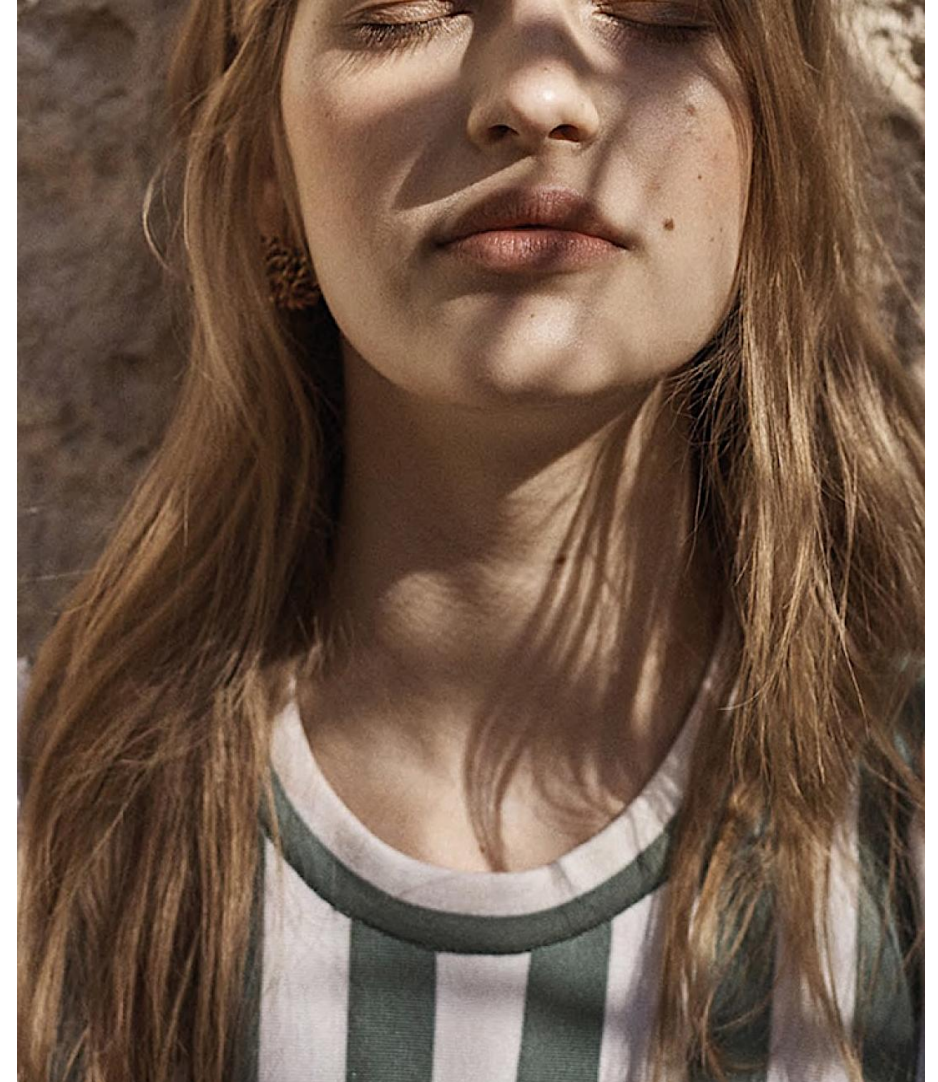
TECH-FOCUS

Protective Hair and Face Spray – Leave on D/130/18 ref. A

Campo Raigankin Hydroglycolic Extract: japanese mushroom, polyporus mylittae, can be used in hair care products as scalp stimulant, hair strengthening UV/Sun protection.

Campo Siddha Medico Colors: bioactive colours extract from flower, bark, leaves plant and mineral oxides from Siddha Material Medica.

Protelan PCA: it is a very mild surfactant, it improves moisture levels of the skin and brings a significant reduction of the irritation potential caused by ether sulfates. Moreover it helps the development of the foam into bubbling mask formulations .



O/W Body Butter B/117/09 Ref.A

Key Ingredients: Mulsifan CSA 02, Mulsifan CSA 21, Sebumol SPC

Phase	Ingredients	INCI	% w/w	Supplier
A	Mulsifan CSA 02	Steareth-2	3.0	Z&S
	Mulsifan CSA 21	Steareth-21	2.0	Z&S
	Shea Butter	Butyrospermum parkii	8.0	/
	Cocoa Butter	Theobroma cacao seed butter	8.0	/
	Sebumol SPC	Isostearyl PCA	2.0	Z&S
	Cetearyl Alcohol	Cetearyl Alcohol	3.0	/
	Cera alba	Cera alba	3.0	/
	Glyceryl Stearate	Glyceryl Stearate	1.0	/
B	Water	Aqua	Qs to 100	/
	Dehydroxantham gum	Dehydroxantham gum	0.3	/
	Glycerin	Glycerin	4.0	/
C	Preservative & Fragrance	/	Qs	/

The information and recommendation in this publication are to the best of our knowledge and belief accurate at the date of publication. Nothing herein is to be construed as a warranty, express or otherwise. In all cases, it is responsibility of the user to determine the applicability of such information or the suitability of any products . Trade names named are property of the respective company. The formulation reported above are only guidelines for the best use of raw materials. They do not represent your final formulation. We are not held responsible for any unsuccessful trial.

TECH-FOCUS

O/W Body Butter B/117/09 Ref.A

Mulsifan CSA 02 – 21: it is a system of non ionic emulsifiers with a long history of use, well known for formation of liquid crystal emulsions. They can be used in different range of viscosity: from very fluid emulsions (roll on: 2000-4000 mPa.s) to high viscosity creams (body butter > 200000 mPa.s). Moreover it is possible to change the viscosity of the system by changing quantity and ratio of the two emulsifiers.

Sebumol SPC: is a special moisturizing ester of PCA and Isostearyl (C18, branched) alcohol for rinse-off formulations e.g. bath and shower oils, moisturizing creams, lotions and syndet bars, hair rinse. It also shows good performance in the emulsification processes of low concentrated emulsions with small particle size (especially in combination with acyl glutamates).

